



MICHIGAN STATE UNIVERSITY
FISHERIES & WILDLIFE



Mike Jones and Weiming Li soon after hiring, 1998.

Photo: Mike Jones



MICHIGAN STATE UNIVERSITY
FISHERIES & WILDLIFE



Bill Taylor and Abby Lynch on the Old Grin, 2001

Photo: Mike Jones



Advisors Inc. facilitator team in Mike Jones' FW854 class, 2005

Photo: Mike Jones



MICHIGAN STATE UNIVERSITY
FISHERIES & WILDLIFE



Capture of a male Lake Sturgeon on the upper Black River

Photo credit: Black River Streamside Rearing Facility



MICHIGAN STATE UNIVERSITY
FISHERIES & WILDLIFE



Adult Sturgeon 353 of 2025

Photo credit: Black River Streamside Rearing Facility



MICHIGAN STATE UNIVERSITY
FISHERIES & WILDLIFE



Rose Lab BB game watch after MI-ASM conference

Photo credit: Marc Verhougstrate



A Allbee

MICHIGAN STATE UNIVERSITY
FISHERIES & WILDLIFE



Dr. Burrow turtle trapping at Corey Marsh

Photo credit: A Allbee



MICHIGAN STATE UNIVERSITY
FISHERIES & WILDLIFE



Kristie Sitar doing deer telemetry in 1997

Photo credit: Kathryn Braun



MICHIGAN STATE UNIVERSITY
FISHERIES & WILDLIFE



Mark Garner radio collaring white-tailed deer

Photo credit: Darian Muzo



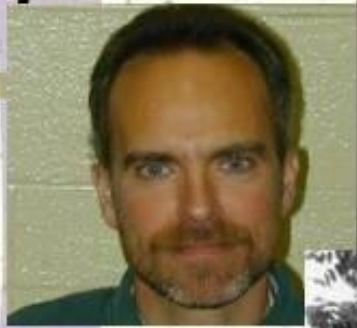
MICHIGAN STATE UNIVERSITY
FISHERIES & WILDLIFE



FW faculty authors of Wildlife Society Bulletin Paper

Photo credit: Dan Hayes

Faculty





MICHIGAN STATE UNIVERSITY
FISHERIES & WILDLIFE



Jordan Burroughs holding a collared fawn

Photo credit: Rique Campa



MICHIGAN STATE UNIVERSITY
FISHERIES & WILDLIFE



Retired FW faculty member Don Garling

1950-2025



MICHIGAN STATE UNIVERSITY
FISHERIES & WILDLIFE



Dave Luukkonen and Randy Knapik with collared mute swan

Photo credit: John Hummel



MICHIGAN STATE UNIVERSITY
FISHERIES & WILDLIFE



Ben Luukkonen and John Coluccy with radio collared hen mallard

Photo credit: Derek Christians



MICHIGAN STATE UNIVERSITY
FISHERIES & WILDLIFE



Shannon Stemaly and Ben Luukkonen radio collaring hen mallard

Photo credit: Don Avers



MICHIGAN STATE UNIVERSITY
FISHERIES & WILDLIFE



Bear trying to reach bait as part of a population estimation study

Photo credit: Field camera

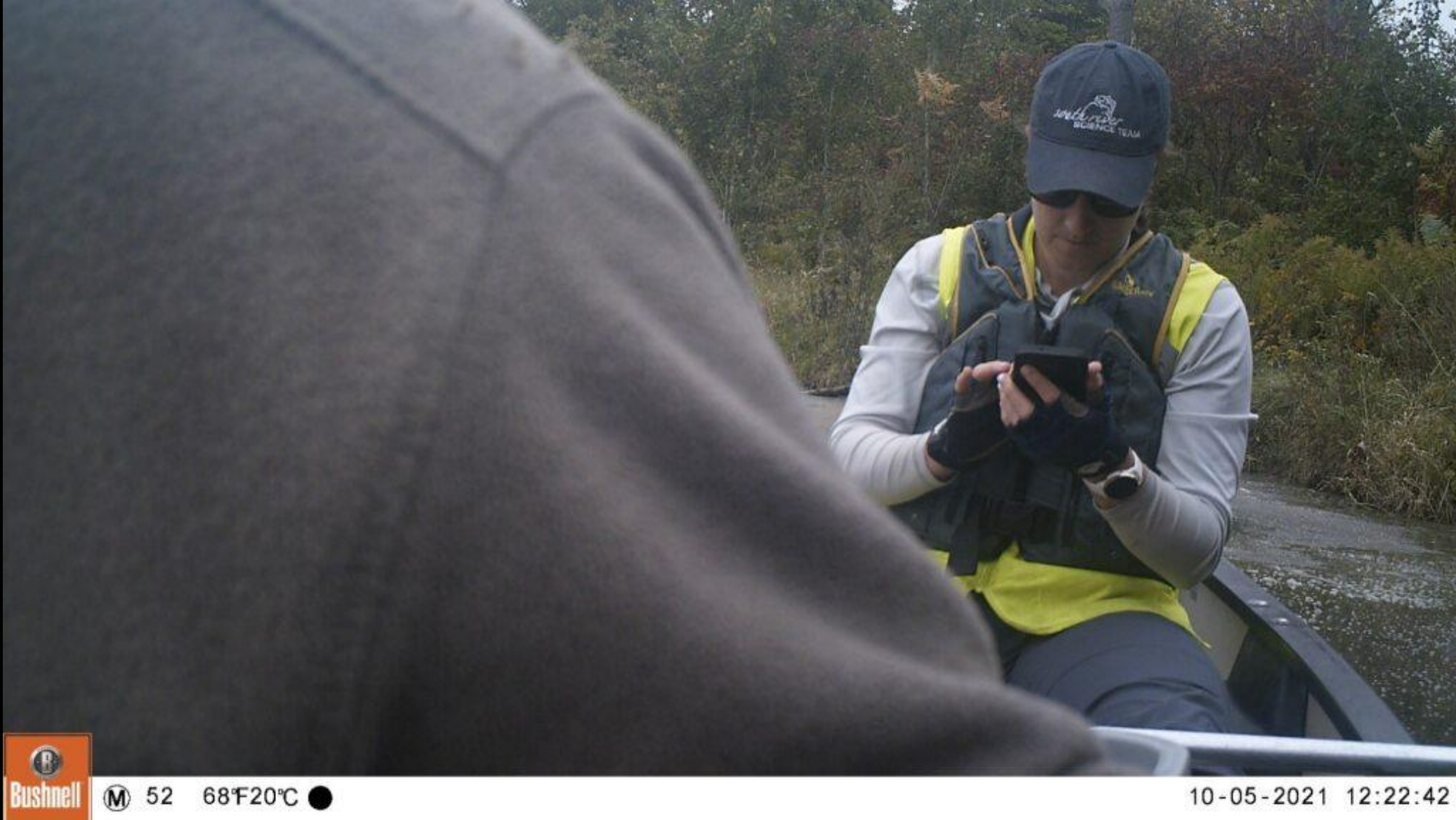


MICHIGAN STATE UNIVERSITY
FISHERIES & WILDLIFE



Dean Beyer with radio collared moose

Photo credit: Jeanne Ross



M 52 68°F/20°C ●

10-05-2021 12:22:42

MICHIGAN STATE UNIVERSITY
FISHERIES & WILDLIFE



Mauri Liberati checking GPS coordinates for the managed wetlands project

Photo credit: Field camera



MICHIGAN STATE UNIVERSITY
FISHERIES & WILDLIFE



Field crew radio collaring a moose in the UP

Photo credit: Gary Brennan



Dr. Chandra and Dr. Bennett reviewing fisheries landing data in Yucatán, Mexico

Photo credit: Meghana Karumuri



MICHIGAN STATE UNIVERSITY
FISHERIES & WILDLIFE



Dried sea cucumber found at an abandoned processing site in Yucatán, Mexico.

Photo credit: Meghana Karumuri



MICHIGAN STATE UNIVERSITY
FISHERIES & WILDLIFE



Fileted manta ray being prepared to be sold at a fisher's bodega.

Photo credit: Meghana Karumuri



MICHIGAN STATE UNIVERSITY
FISHERIES & WILDLIFE



Hannah Bey preparing to perform gastric lavage on a green frog

Photo credit: A Proudfoot



MICHIGAN STATE UNIVERSITY
FISHERIES & WILDLIFE



A Proudfoot and Hannah Bey preparing for anuran survey at CMERC

Photo credit: Hannah Bey



MICHIGAN STATE UNIVERSITY
FISHERIES & WILDLIFE



Grad student Brady Yokom taking bacterial cultures during a fish health inspection

Photo credit: Brady Yokom



MICHIGAN STATE UNIVERSITY
FISHERIES & WILDLIFE



Grad student Brady Yokom with experimental challenge tanks at University Research Containment Facility

Photo credit: Brady Yokom



MICHIGAN STATE UNIVERSITY
FISHERIES & WILDLIFE



Former grad student (now Dr.) Sean Lennox testing wild salmon for bacterial pathogen

Photo credit: Sean Lennox



MICHIGAN STATE UNIVERSITY
FISHERIES & WILDLIFE



Dr. Thomas Loch teaching at Wolf Lake State Fish Hatchery

Photo credit: Megan Shavalier



MICHIGAN STATE UNIVERSITY
FISHERIES & WILDLIFE



Former grad student Amber Johnston at Little Manistee River Weir

Photo credit: Tom Loch

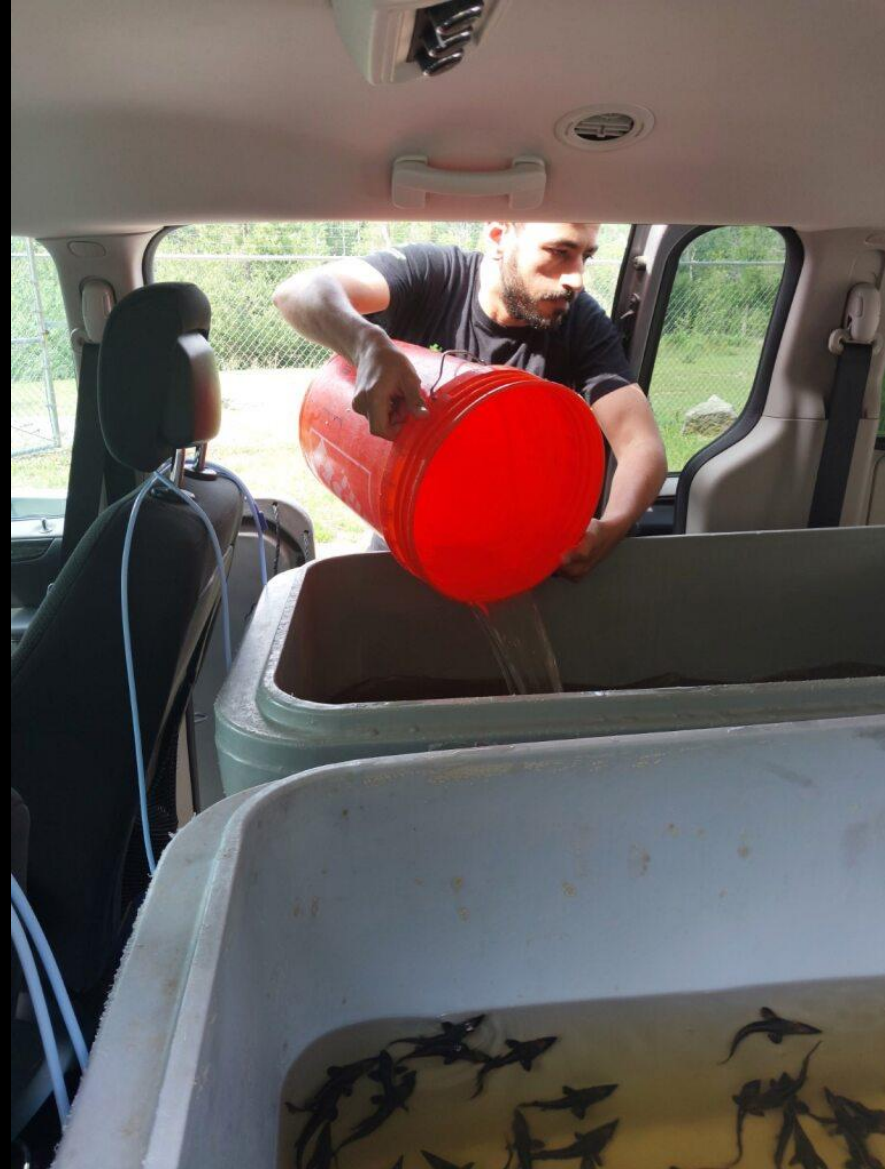


MICHIGAN STATE UNIVERSITY
FISHERIES & WILDLIFE



Grad student Mohamed Khalifa working with cell cultures

Photo credit: Mohamed Khalifa



MICHIGAN STATE UNIVERSITY
FISHERIES & WILDLIFE



Grad student Mohamed Khalifa transporting juvenile lake sturgeon

Photo credit: Mohamed Khalifa

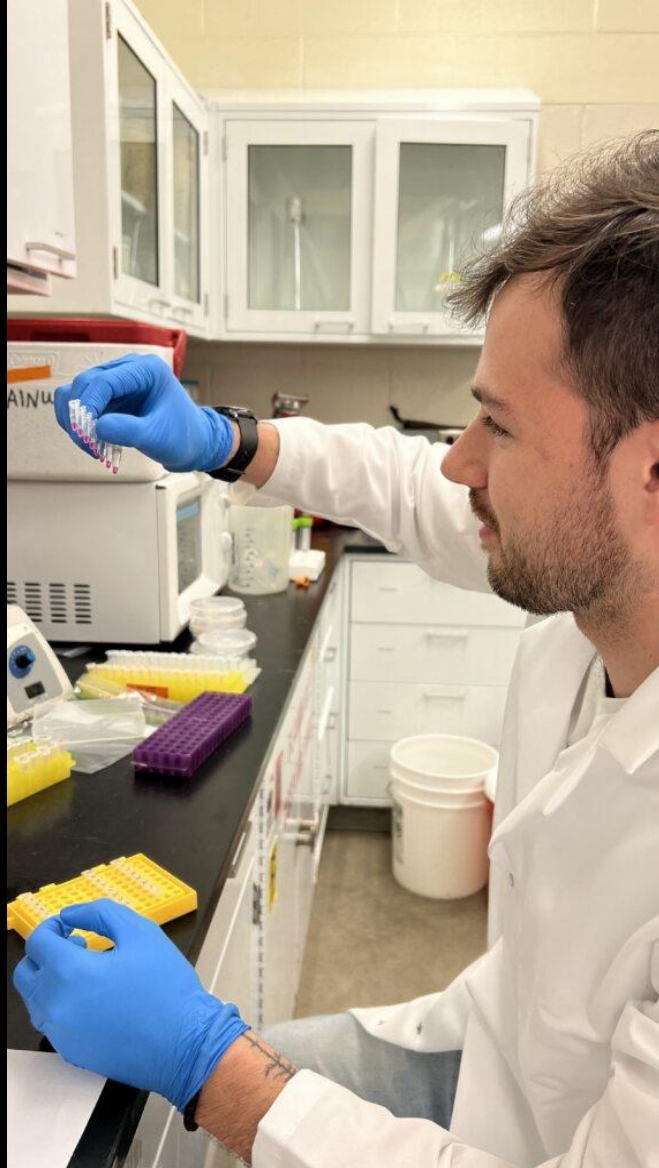


MICHIGAN STATE UNIVERSITY
FISHERIES & WILDLIFE



Grad student Mohamed Khalifa collecting health samples from adult lake sturgeon

Photo credit: Mohamed Khalifa



MICHIGAN STATE UNIVERSITY
FISHERIES & WILDLIFE



Former grad student (now Dr.) Sean Lennox using novel assay to test spawning salmon

Photo credit: Megan Shavalier



Former grad student (now Dr.) Sean Lennox collecting blood from adult musky

Photo credit: Sean Lennox

MICHIGAN STATE UNIVERSITY
FISHERIES & WILDLIFE



1950-2025



MICHIGAN STATE UNIVERSITY
FISHERIES & WILDLIFE



Dr. Megan Shavalier with then grad student Amber Johnston at Thompson State Fish Hatchery

Photo credit: Megan Shavalier



MICHIGAN STATE UNIVERSITY
FISHERIES & WILDLIFE



Drs. Megan Shavalier, Chris Knupp, Eileen Henderson, and Michelle VanDeuren and Angela Sondgerath at Swan River Weir

Photo credit: Megan Shavalier



Site Visit "Kit"

- Paper towels
- 10% formalin
- 70% ethanol (and in spray form)
- Whirl packs
- (assorted volume)
- on vials
- cups
- (sterile as)

MICHIGAN STATE UNIVERSITY
FISHERIES & WILDLIFE



Dr. Thomas Loch teaching fish health techniques to regional veterinarians

Photo credit: Nisha Shrestha



MICHIGAN STATE UNIVERSITY
FISHERIES & WILDLIFE



Dr. Thomas Loch teaching fish health necropsy to regional veterinarians

Photo credit: Nisha Shrestha



MICHIGAN STATE UNIVERSITY
FISHERIES & WILDLIFE



Dr. Thomas Loch teaching fish health necropsy to regional veterinarians

Photo credit: Nisha Shrestha



MICHIGAN STATE UNIVERSITY
FISHERIES & WILDLIFE



PhD student Mohamed Khalifa with adult lake sturgeon in Black River

Photo credit: Mohamed Khalifa

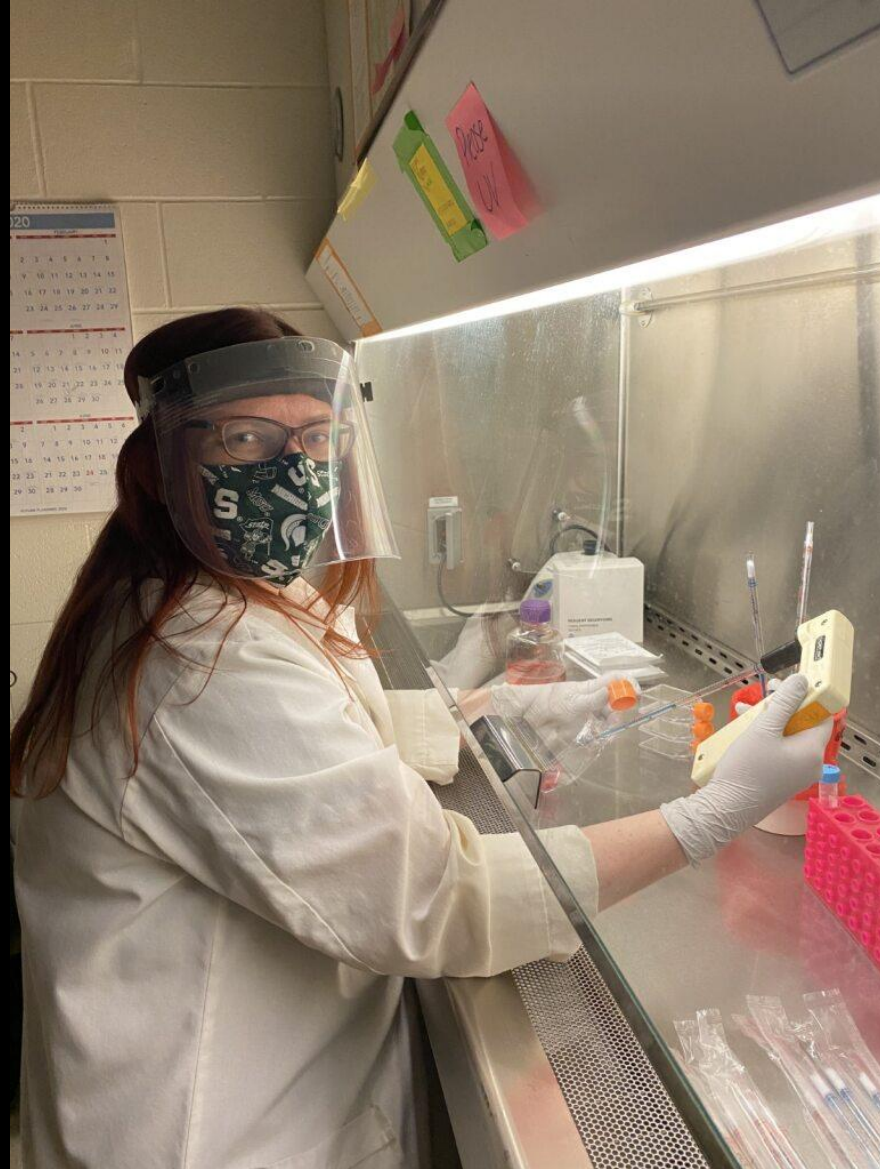


MICHIGAN STATE UNIVERSITY
FISHERIES & WILDLIFE



Former grad student (now Dr.) Sean Lennox with adult walleye submitted by MI-DNR for annual fish health testing

Photo credit: X



MICHIGAN STATE UNIVERSITY
FISHERIES & WILDLIFE



Dr. Megan Shavalier in cell culture

Photo credit: Tom Loch



MICHIGAN STATE UNIVERSITY
FISHERIES & WILDLIFE



Dr. Megan Shavalier and former grad student Amber Johnston with adult lake sturgeon in St Clair River

Photo credit: Megan Shavalier



MICHIGAN STATE UNIVERSITY
FISHERIES & WILDLIFE



Grad student Nisha Shrestha and Dr. Kwamina Otseidu at Lake Superior State University

Photo credit: Mohamed Khalifa



MICHIGAN STATE UNIVERSITY
FISHERIES & WILDLIFE



Dr. Thomas Loch and Dr. Megan Shavalier at Harrietta State Fish Hatchery

Photo credit: Tom Loch



MICHIGAN STATE UNIVERSITY
FISHERIES & WILDLIFE



Dr. Thomas Loch plus current and past MSU-AAHL members at Grand Rapids Public Museum

Photo credit: Tom Loch



MICHIGAN STATE UNIVERSITY
FISHERIES & WILDLIFE



Owl Banding

Photo credit: Jen Owen



MICHIGAN STATE UNIVERSITY
FISHERIES & WILDLIFE



Owl Banding

Photo credit: Jen Owen



MICHIGAN STATE UNIVERSITY
FISHERIES & WILDLIFE



CMERC Avian Disease Training 2023

Photo credit: Jen Owen



MICHIGAN STATE UNIVERSITY
FISHERIES & WILDLIFE



Study Abroad Trip to South Africa



MICHIGAN STATE UNIVERSITY
FISHERIES & WILDLIFE



Fieldwork with hawks

Photo credit: Jen Owen



MICHIGAN STATE UNIVERSITY
FISHERIES & WILDLIFE



Black bear cubs during den check



MICHIGAN STATE UNIVERSITY
FISHERIES & WILDLIFE



First Annual Cooperator's Meeting



MICHIGAN STATE UNIVERSITY
FISHERIES & WILDLIFE



Senator Slotkin at the Hammond Bay Biological Center



MICHIGAN STATE UNIVERSITY
FISHERIES & WILDLIFE



Trip to Madagascar



MICHIGAN STATE UNIVERSITY
FISHERIES & WILDLIFE



Trip to Madagascar

1950-2025



MICHIGAN STATE UNIVERSITY
FISHERIES & WILDLIFE



2013 Red Cedar Steelhead Release



MICHIGAN STATE UNIVERSITY
FISHERIES & WILDLIFE



Spartan Stadium Peregrine Falcon Box 2024

MSU SPARTAN STADIUM FALCON



MICHIGAN STATE UNIVERSITY
FISHERIES & WILDLIFE



Spartan Stadium Peregrine Falcon Box 2024





MICHIGAN STATE UNIVERSITY
FISHERIES & WILDLIFE



2017 FW Faculty Retreat



MICHIGAN STATE UNIVERSITY
FISHERIES & WILDLIFE



2014 Tenure Faculty Dinner

1950-2025



Bushnell

03-06-2011 13:25:24

MICHIGAN STATE UNIVERSITY
FISHERIES & WILDLIFE



Jaguar caught on trail camera in 2011

1950-2025



MICHIGAN STATE UNIVERSITY
FISHERIES & WILDLIFE



Coyote caught on trail camera

Photo credit: Brett DeGregorio



45°F (02/27/2022 07:51PM CAMERA1

MICHIGAN STATE UNIVERSITY
FISHERIES & WILDLIFE



Coyote carrying prey caught on trail camera

Photo credit: Brett DeGregorio



77°F 01/08/2022 12:25PM CAMERA 1

MICHIGAN STATE UNIVERSITY
FISHERIES & WILDLIFE



White-tailed deer buck caught on trail camera

Photo credit: Brett DeGregorio



65°F 07/05/2025 01:59AM CAMERA 1

MICHIGAN STATE UNIVERSITY
FISHERIES & WILDLIFE



Snowshoe hare caught on trail camera

Photo credit: Brett DeGregorio



54°F 06/20/2025 03:07AM CAMERA 1

MICHIGAN STATE UNIVERSITY
FISHERIES & WILDLIFE



Black bear rubbing its back against a cedar tree along the river

Photo credit: Brett DeGregorio



54° 06/20/2025 03:07AM CAMERA1

MICHIGAN STATE UNIVERSITY
FISHERIES & WILDLIFE



Black bear caught on trail camera

Photo credit: Brett DeGregorio



41°F (05/23/2025 12:50AM CAMERA 1

MICHIGAN STATE UNIVERSITY
FISHERIES & WILDLIFE



Porcupine climbing a cedar tree

Photo credit: Brett DeGregorio



MICHIGAN STATE UNIVERSITY
FISHERIES & WILDLIFE



Roth Lab research
Photo credit: Brian Roth



MICHIGAN STATE UNIVERSITY
FISHERIES & WILDLIFE



Roth Lab fieldwork

Photo credit: Brian Roth



MICHIGAN STATE UNIVERSITY
FISHERIES & WILDLIFE



Roth Lab fieldwork

Photo credit: Brian Roth



MICHIGAN STATE UNIVERSITY
FISHERIES & WILDLIFE



Roth Lab fieldwork

Photo credit: Brian Roth



MICHIGAN STATE UNIVERSITY
FISHERIES & WILDLIFE



Roth Lab fieldwork

Photo credit: Brian Roth



MICHIGAN STATE UNIVERSITY
FISHERIES & WILDLIFE



Roth Lab fieldwork

Photo credit: Brian Roth



MICHIGAN STATE UNIVERSITY
FISHERIES & WILDLIFE



Red Swamp Crayfish Response Team

Photo credit: Brian Roth



MICHIGAN STATE UNIVERSITY
FISHERIES & WILDLIFE



Red Swamp Crayfish Response Team

Photo credit: Brian Roth



MICHIGAN STATE UNIVERSITY
FISHERIES & WILDLIFE



Heidi Ziegenmeyer during field work studying the reproductive behavior of largemouth bass

Photo credit: Mary Tate Bremigan



MICHIGAN STATE UNIVERSITY
FISHERIES & WILDLIFE



Jan Michael Hassenauer during field work studying the reproductive behavior of largemouth bass

Photo credit: Mary Tate Bremigan



MICHIGAN STATE UNIVERSITY
FISHERIES & WILDLIFE



Jan Michael Hassenauer, Brett Riser, and Matt Horsely during field work studying the reproductive behavior of largemouth bass

Photo credit: Mary Tate Bremigan



Largemouth bass from field work studying their reproductive behavior

Photo credit: Mary Tate Bremigan



MICHIGAN STATE UNIVERSITY
FISHERIES & WILDLIFE



Largemouth bass nest from field work studying reproductive behavior

Photo credit: Mary Tate Bremigan



MICHIGAN STATE UNIVERSITY
FISHERIES & WILDLIFE



Dr. Bremigan during field work studying the reproductive behavior of largemouth bass

Photo credit: Mary Tate Bremigan



MICHIGAN STATE UNIVERSITY
FISHERIES & WILDLIFE



Bill Taylor in 2010

Photo credit: Dana Infante



MICHIGAN STATE UNIVERSITY
FISHERIES & WILDLIFE



Dr. Roth and Dr. Murphy in 2010

Photo credit: Dana Infante



MICHIGAN STATE UNIVERSITY
FISHERIES & WILDLIFE



Dan Kramer and Shikha Singh in 2016

Photo credit: Dana Infante



MICHIGAN STATE UNIVERSITY
FISHERIES & WILDLIFE



Dr. Infante and Dr. Hayes

1950-2025



MICHIGAN STATE UNIVERSITY
FISHERIES & WILDLIFE



Dr. Infante and Ralph Tingley in 2016

1950-2025



MICHIGAN STATE UNIVERSITY
FISHERIES & WILDLIFE



AFS Fenske Breakfast in Portland, OR (2015)



MICHIGAN STATE UNIVERSITY
FISHERIES & WILDLIFE



FW in the Field (2009)

Photo credit: Dana Infante



MICHIGAN STATE UNIVERSITY
FISHERIES & WILDLIFE



FW Fall Picnic (2024)

Photo credit: Jen Owen



MICHIGAN STATE UNIVERSITY
FISHERIES & WILDLIFE



Fly Gals (2014)

Photo credit: Dana Infante

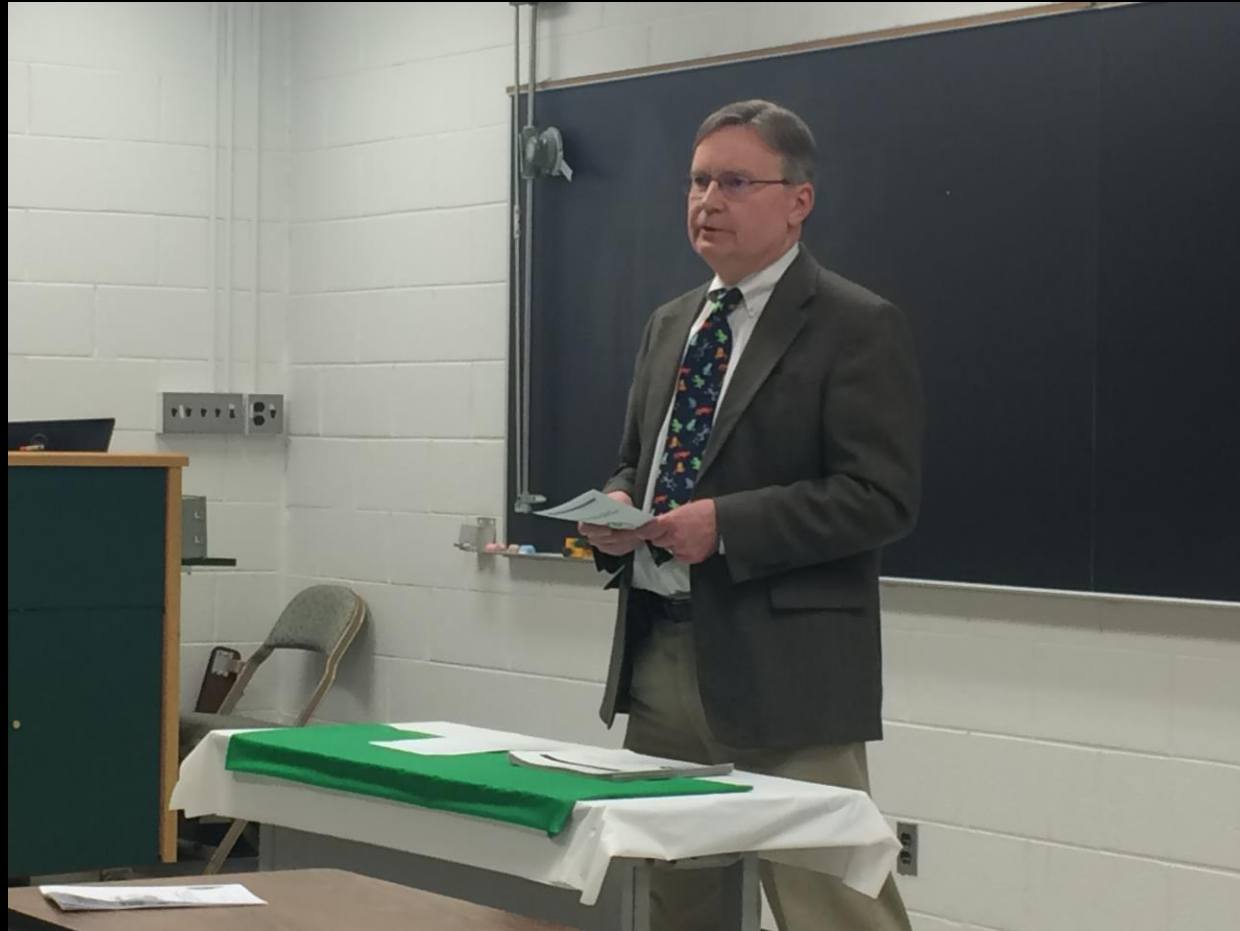


MICHIGAN STATE UNIVERSITY
FISHERIES & WILDLIFE



Lois Wolfson Receiving Extension Award (2018)

Photo credit: Dana Infante



MICHIGAN STATE UNIVERSITY
FISHERIES & WILDLIFE



Scott Loveridge at FW Award Ceremony (2018)

Photo credit: Dana Infante



MICHIGAN STATE UNIVERSITY
FISHERIES & WILDLIFE



Visit to Wa Wa Sum (2008)

Photo credit: Dana Infante



MICHIGAN STATE UNIVERSITY
FISHERIES & WILDLIFE



Sharon Reasoner Receiving 2017 Jack Breslin Award



MICHIGAN STATE UNIVERSITY
FISHERIES & WILDLIFE



Bill Porter on Lab Fishing Trip (2017)



MICHIGAN STATE UNIVERSITY
FISHERIES & WILDLIFE



Visiting Katmai National Park Fieldwork Site

Photo credit: Bill Porter



MICHIGAN STATE UNIVERSITY
FISHERIES & WILDLIFE



Woodcock Transmitter (2017)

Photo credit: Ashley Huinker (now Firkus)



MICHIGAN STATE UNIVERSITY
FISHERIES & WILDLIFE



White-tailed Deer Movement Study (2019)

Photo credit: Jonathan Trudeau



MICHIGAN STATE UNIVERSITY
FISHERIES & WILDLIFE



FW Yellowstone Study Away (2017)

Photo credit: David Williams



MICHIGAN STATE UNIVERSITY
FISHERIES & WILDLIFE



Boone and Crockett Program (2017)

Photo credit: Bill Porter